



2019
**ARKANSAS FFA
ANNUAL REPORT**



BOARD OF DIRECTORS

ANDY GUFFEY, CHAIR

Arkansas Farm Bureau

GLEN MANCHESTER, VICE-CHAIR

Farm Credit of Western Arkansas

JOHN JONES, SECRETARY-TREASURER

AVATA Representative
Glen Rose FFA

ROB ROEDEL

Electric Cooperatives of Arkansas

SENATOR BRUCE MALOCH

Farmer's Bank & Trust

MIKE COLLINS

FFA Association Advisory Committee Chair
Mena FFA

CLINT HALE

Camp Couchdale Committee Chair
Prairie Grove FFA

RODNEY WIEDOWER

AVATA Representative
Greenbrier FFA

DAVID HAYS

AVATA Representative
Prairie Grove FFA

RONNIE DUCKETT

20 Year Club Representative
Retired Ag Ed Instructor

As you look through our annual report, it will become abundantly clear that we are embarking on a major fundraising campaign. I am excited for the work that is being done and the future plans we have for the Arkansas FFA and Camp Couchdale. The most important resource we have in agriculture is the more than 14,000 FFA members in Arkansas. They are the future producers, leaders and innovators for agriculture, and they need the support of the entire agriculture industry to prepare them to continue the great work of feeding the world. I believe that the Arkansas FFA has the greatest potential to provide opportunities for learning and leadership for the future of agriculture. Now, more than ever, we need your support to provide the technology and resources necessary to grow this next generation and ensure that Arkansas agriculture continues to move forward.

On behalf of the board of directors, I want to thank you for your support of the Arkansas FFA Foundation and the Arkansas FFA Association. Everything you do to help us is changing lives and growing the next generation of leaders.



Andy Guffey
Board Chairman

CONTACT US:

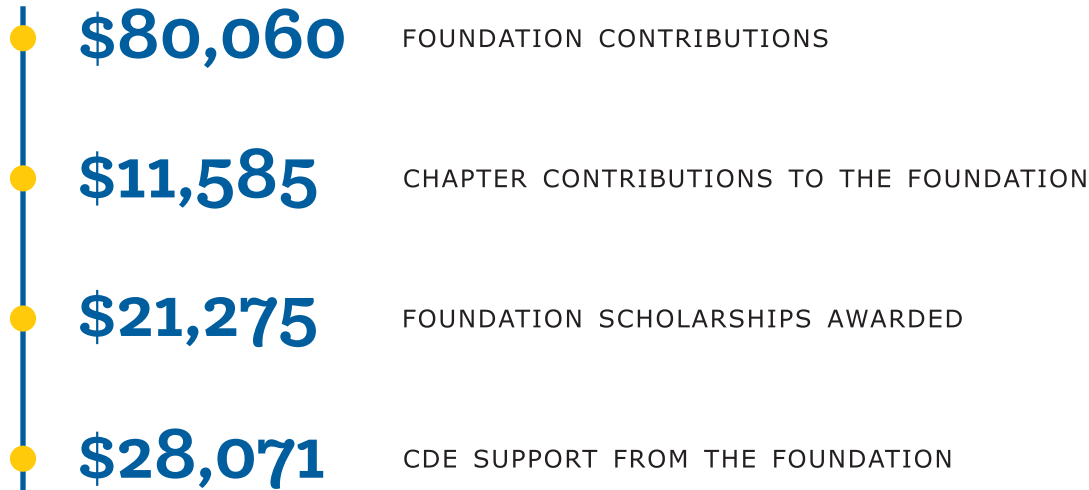
OFFICE: 501.262.1326

MAIL: 301 Catherine Park Rd
Hot Springs, AR 71913

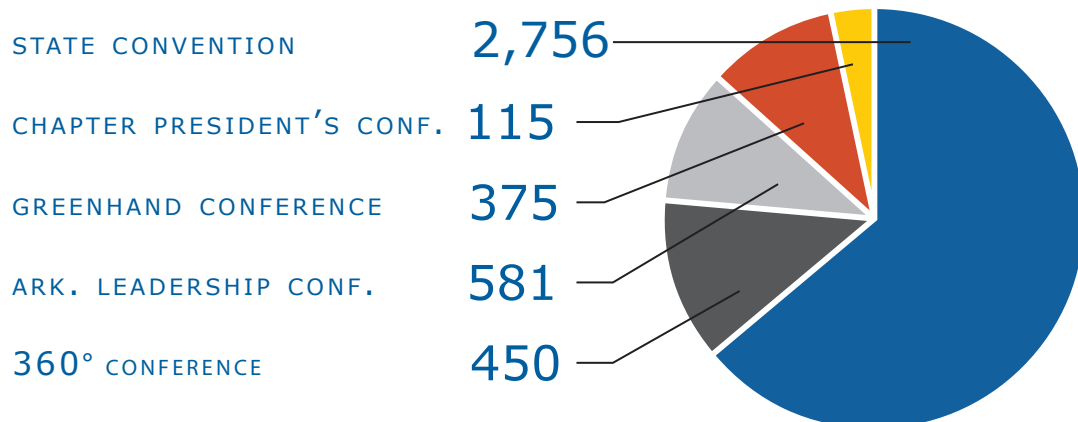
ARK. FFA BY THE NUMBERS



TOTAL NUMBER OF ARK. FFA MEMBERS



2019 CAMP ATTENDANCE



CDE SPONSORS

- ARKANSAS BEEF COUNCIL**
Meats Evaluation & Technology
- ARKANSAS FARM BUREAU FOUNDATION**
Discussion Meet
Extemporaneous Public Speaking
Prepared Public Speaking
- ARKANSAS FFA ALUMNI**
Conduct of Chapter Meetings
- ARKANSAS POULTRY FEDERATION**
Poultry Evaluation
- ARK. VOCATIONAL AGRICULTURE TEACHERS ASSOCIATION**
Creed Speaking
- AXLES PLUS**
Shooting Sports
- ELECTRIC COOPERATIVES OF ARKANSAS**
Electrification
- FARM CREDIT**
Parliamentary Procedure
- FRESH COUNTRY**
Agricultural Communications
- GREENWAY EQUIPMENT**
Agricultural Mechanics
- RICELAND FOODS FOUNDATION**
Agronomy
- SEITZ GIFT FRUIT LLC**
Farm & Agribusiness Management

All other events sponsored by Arkansas FFA Foundation.



DONORS

PLATINUM: \$12,000+

Electric Cooperatives of Arkansas

GOLD: \$8,000 - \$11,999

Arkansas Farm Bureau Foundation
Farm Credit Services of Arkansas

SILVER: \$5,000 - \$7,999

BRONZE: \$2,000 - \$4,999

Arkansas Beef Council
Arkansas FFA Alumni
Arkansas Poultry Federation
Ark. Vocational Ag Teachers Assoc.
Blue & Gold Sausage Co.
Farm Credit of Western Arkansas
Fresh Country Fundraising
Greenway Equipment
Riceland Foods Foundation
Seitz Gift Fruit LLC

CHAPTER DONORS

\$2,000+
Prairie Grove

\$500 - 999
Ashdown
Glen Rose
Greene County Tech
Guy Perkins
Spring Hill

\$100 - 249
Blytheville
Booneville
Cossatot River
County Line
Crossett
Jackson County
Lincoln
Pottsville
Waldron

\$1,000 - 1,999
Farmington
Mena
Mountain Home

\$250 - 499
Bismarck
Concord
Gravette
Lamar
Mansfield
Pangburn
Paragould

\$1 - 99
Marshall



FOR A FULL LIST OF OUR EXTRAORDINARY DONORS,
VISIT WWW.ARKANSASFFA.ORG/FOUNDATION

JOIN THE CORDUROY CLUB



Remember the first time you zipped up that blue corduroy FFA jacket? Think about all of the wonderful memories you made as an FFA member! Here's your opportunity to give back to an organization that provides life changing opportunities to students across Arkansas. Your monthly gift will be allocated by the Arkansas FFA Foundation wherever the need is greatest. Memberships start at just \$10/month!

CORDUROY CLUB MEMBERSHIP LEVELS

- **Friends of the FFA** - \$10/month
- **Blue Jacket Believers** - \$20/month
- **Bleed Blue + Gold** - \$50/month
- **Rising Sun Supporters** - \$100/month
- **Legacy Investors** - \$200/month
- **President's Circle** - over \$500/month
- **Forever Blue** - Planned Gifts
- **Forever Gold** - Endowments



VISIT ARKANSASFFA.ORG/FOUNDATION TO REVIEW THE BENEFITS OF EACH MEMBERSHIP LEVEL



1928 SENIOR SOCIETY

Honor your Senior by nominating them to be inducted into the 1928 Senior Society. Each inductee will receive a **1 year membership into the Corduroy Club**, along with the Corduroy Club vehicle decal, and their name placed in the Programming Guide during the current State FFA Convention. The cost to nominate your Senior is just \$19.28.

VISIT WWW.ARKANSASFFA.ORG/FOUNDATION FOR MORE INFORMATION + TO DONATE!

WHY WE LOVE THE FFA



DOMINIC PIZZIMENTI
MOUNTAIN HOME FFA

“ WHY DID YOU JOIN FFA?

I joined FFA after seeing a few friends that had showed interest in the 8th grade. I didn't think much of it until I got to attend National Convention that year. After seeing all the new faces from around the country, my passion was ignited and I was hooked.

TELL US ABOUT YOUR INVOLVEMENT + ACHIEVEMENTS IN FFA TO DATE.

I currently serve as our chapter vice president. I've competed on the Milk Quality, Meats, Poultry, and Land Evaluation CDE teams. I've competed in Parliamentary Procedure for the past four years, which we placed second in the state last year. I've placed first in the state for the Landscape Management Proficiency Award and second in the state for Job Interview. Most recently, I attended the Senior Ag Tour, Chapter Presidents Conference, and Washington Leadership Conference. I have shown market goats, broilers, commercial heifers, and market hogs since 8th grade. Last year, I won the Northwest Arkansas District Fair Market Hog Show.

WHAT ARE YOUR PLANS AFTER GRADUATION?

I plan on attending Southern Arkansas University or Arkansas Tech University to major in agricultural education and minor in agricultural business. I hope to be an ag teacher and help young young adults with their SAEs and showing livestock.



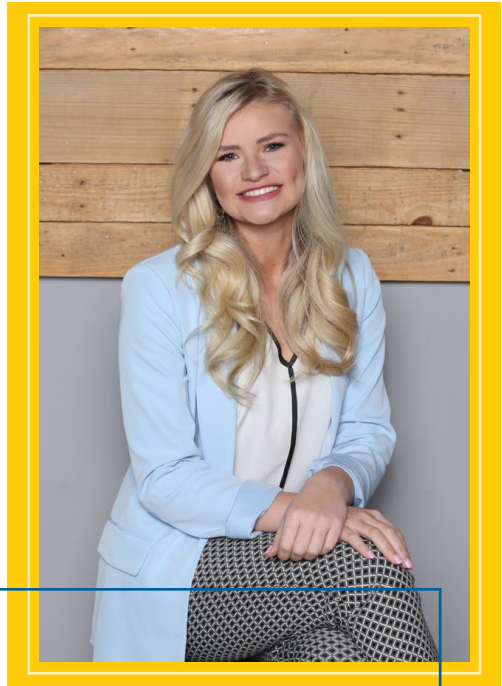


WHY DID YOU JOIN FFA?

I took an ag class in 8th grade because I thought study hall was boring and I didn't want to waste 45 minutes a day doing nothing. As soon as I got in that class, my teachers started pouring into me by introducing me to FFA and agriculture and its many opportunities. I had little interaction with agriculture previously, but it only took a month for me to fall in love with the industry and FFA. I always knew I wanted to be a world changer, but I never imagined there was such an important place to do that in agriculture. As soon as I saw that, I was hooked. I joined at that point and I've never looked back.

TELL US ABOUT YOUR INVOLVEMENT + ACHIEVEMENTS IN FFA TO DATE.

I have competed in the Agronomy CDE, which my team won when I was a sophomore, and the Vet Science CDE. Additionally, I have competed in the Creed Speaking, Conduct of Chapter Meetings, Parliamentary Procedure, Discussion Meet, and Extemporaneous Public Speaking leadership events. As a junior, I won the state talent, state Extemporaneous Speaking, and state Discussion Meet. Recently, I was selected as a World Food Prize finalist and served on the State Nominating Committee. I have served as reporter and president on my chapter officer team and have attended Washington Leadership Conference, National FFA Convention, Arkansas Leadership Conference, and Chapter President's Conference.



BROOKE BRADFORD
CLINTON FFA



WHAT ARE YOUR PLANS AFTER GRADUATION?

I plan to attend the University of Arkansas to double major in Agricultural Communications and Political Science. I then plan to go to law school, which will hopefully lead to a job in D.C. where I want to work in national policy lobbying for the agriculture industry, both here in the U.S. and internationally.



WHY WE THANK THE FFA



EDUARDO MEDINA
FORMER MEMBER COSSATOT RIVER FFA
MERCK ANIMAL HEALTH



WHAT HAVE YOU BEEN UP TO SINCE HANGING UP YOUR BLUE JACKET?

While attending Arkansas Tech, FFA continued to provide me with key industry networking opportunities. Thanks to FFA, I was able to build stronger relationships with companies in the Kansas City area – commonly known as the Animal Health Corridor for its vast number of animal health companies in the area. During my time with FFA, I met so many exemplary teachers, liaisons, and representatives who demonstrated a high level of professionalism and dedication to the agricultural industry. They are the definition of leaders and it takes a special kind of someone to TRULY believe in the future of agriculture by investing their time, money and resources into the future generations.

HOW DID ARKANSAS FFA CONTRIBUTE TO YOUR SUCCESS AFTER GRADUATION AND INTO YOUR CAREER?

Shortly after graduating with my bachelor's in Agricultural Business (Animal Science minor), the connections I had made through FFA led me to a career working for Merck Animal Health, the third largest global animal health company, as the Internal Communications Associate Specialist for the United States Commercial Operations. Merck Animal Health is a huge supporter of the FFA and being a previous FFA member really gave me a competitive edge in the interviewing process. During my interview, I talked about my previous experiences in showing livestock, and competing in CDE's and LDE's. They were really impressed whenever I told them that I was the 2016 FFA Veterinary Science State Champion.

As a first-generation student, getting to work here is a huge accomplishment not only for me, but for my parents who immigrated to this country 20+ years ago. They had always worked extremely hard in the agricultural sector to provide me with a better future. Every day I look forward to representing my company and the National FFA Organization in order to help advocate for the agriculture and animal health industry. I will leave on this final quote by Franklin D. Roosevelt that perfectly captures, in my opinion, the essence of FFA... "We cannot always build the future for our youth, but we can build our youth for the future."





WHAT HAVE YOU BEEN UP TO SINCE HANGING UP YOUR BLUE JACKET?

After our state officer team retired, I continued pursuing both my bachelor and master’s degrees in Agricultural Education, Communications & Technology at the University of Arkansas. While I will always consider our whole state officer team family, Cameron Jernigan and I made it official and were married in 2012.

My undergraduate advisors, Drs. Jefferson Miller and Leslie Edgar, encouraged me to pursue both an internship and graduate assistantship with the Cooperative Extension Service in Program and Staff Development. There, Drs. Karen Ballard and Julie Robinson helped me use my passion for agriculture to teach others through instructional design and facilitation.

A friend and former FFA member connected Cameron with a career opportunity that brought us back to Northwest Arkansas, and we both began careers at Walmart’s corporate home office in Bentonville. As part of Walmart US Talent Development, I created training to teach our Bakery, Produce, Meat and Deli associates how to care for fresh agricultural product in stores to give our customers a great experience with their food at home.

Now, as part of Merchandising Operations, I work on our broader US Merchandising strategy initiatives. It’s my job to make sure that the product we buy and the decisions we make help our customers save money so their busy families can live better. Cameron and I have also recently joined the Arkansas FFA Foundation Development Council, which helps to increase support for Arkansas FFA.



HAYLEY JERNIGAN
OZARK FFA, '08-09 STATE SECRETARY
WALMART

HOW DID ARKANSAS FFA CONTRIBUTE TO YOUR SUCCESS AFTER GRADUATION AND INTO YOUR CAREER?

From Jennifer Turner convincing me to write my first speech to the countless hours she, my parents, and then Casey Hammond Beavers spent coaching and helping me grow, to Monica (Coker) Griffin and Amber (Usdrowski) Yarbrough teaching our state officer team what it meant to live above the line, the people I met and the skills I gained as an Arkansas FFA member changed my life. FFA members are difference makers because we are taught tangible lessons about premier leadership, personal growth and career success. When given the opportunity to use our unique backgrounds to make an impact in the real world, we’ve been trained to stand out.



WHY WE GIVE TO THE FFA



“ WHY DO THE ELECTRIC COOPERATIVES OF ARKANSAS GIVE TO THE ARKANSAS FFA FOUNDATION?

The Electric Cooperatives of Arkansas are long-time supporters of Arkansas FFA. The cooperatives know that Arkansas FFA allows young people to obtain skills and knowledge that will propel them toward success in life.

WHAT IS THE VALUE OF YOUR RELATIONSHIP WITH ARKANSAS FFA?

We are dedicated to improving the quality of life in the communities that we serve. Our relationship with Arkansas FFA provides an avenue to support this mission for tomorrow's future leaders.

BILL CONINE
ELECTRIC COOPERATIVES OF ARKANSAS
INTERIM PRESIDENT/CEO



THE ELECTRIC COOPERATIVES OF ARKANSAS ARE THE PROUD SPONSOR OF THE ARKANSAS FFA STATE DEGREES.





“ WHY DO THE FARM CREDIT ASSOCIATIONS OF ARKANSAS GIVE TO THE ARKANSAS FFA FOUNDATION?

The Arkansas FFA Foundation is a well-structured organization and we appreciate the great work they do to support an exceptional FFA program in Arkansas. We believe strongly in FFA’s mission to foster the next generations’ commitment to agriculture - something Farm Credit values, as well.

WHAT IS THE VALUE OF YOUR RELATIONSHIP WITH ARKANSAS FFA?

It’s exciting to see how Arkansas youth are benefitting from FFA involvement. FFA is preparing youth to become tomorrow’s agricultural leaders. It’s also a great training ground for future Farm Credit employees. Skills acquired through an active FFA career translate into valuable professional skills. Supporting the quality FFA programming we have in Arkansas is a win for everyone.





CAPITAL CAMPAIGN

\$5,000,000
to support the Camp Couchdale
Capital Campaign

PLANNED RENOVATIONS

In 1935, through the combined efforts of FFA members and their advisors, Camp Couchdale was purchased and deeded to the Arkansas FFA Association. Over eighty years have passed, and more than ONE MILLION young people have spent time at camp. Our facilities have served us well, but as we continue to grow, our facilities need to grow to meet our needs. The Marion D. Fletcher Leadership Center hasn't been renovated in almost 30 years and lacks many code and technology requirements. Overall, Camp Couchdale lacks teaching and experiential learning facilities. Planned renovations include a new auditorium, animal science and agricultural mechanics labs, an updated corridor and foyer, six new classrooms, and new cabins.



FOR MORE INFORMATION

JENNIFER COOK
jennifer.cook@arkansasffa.org

Your gift will greatly impact the Arkansas FFA Association's ability to develop facilities capable of providing even greater leadership, education, and experiential learning opportunities to students across Arkansas.